

“Navigating the Special Education ELL Highway”

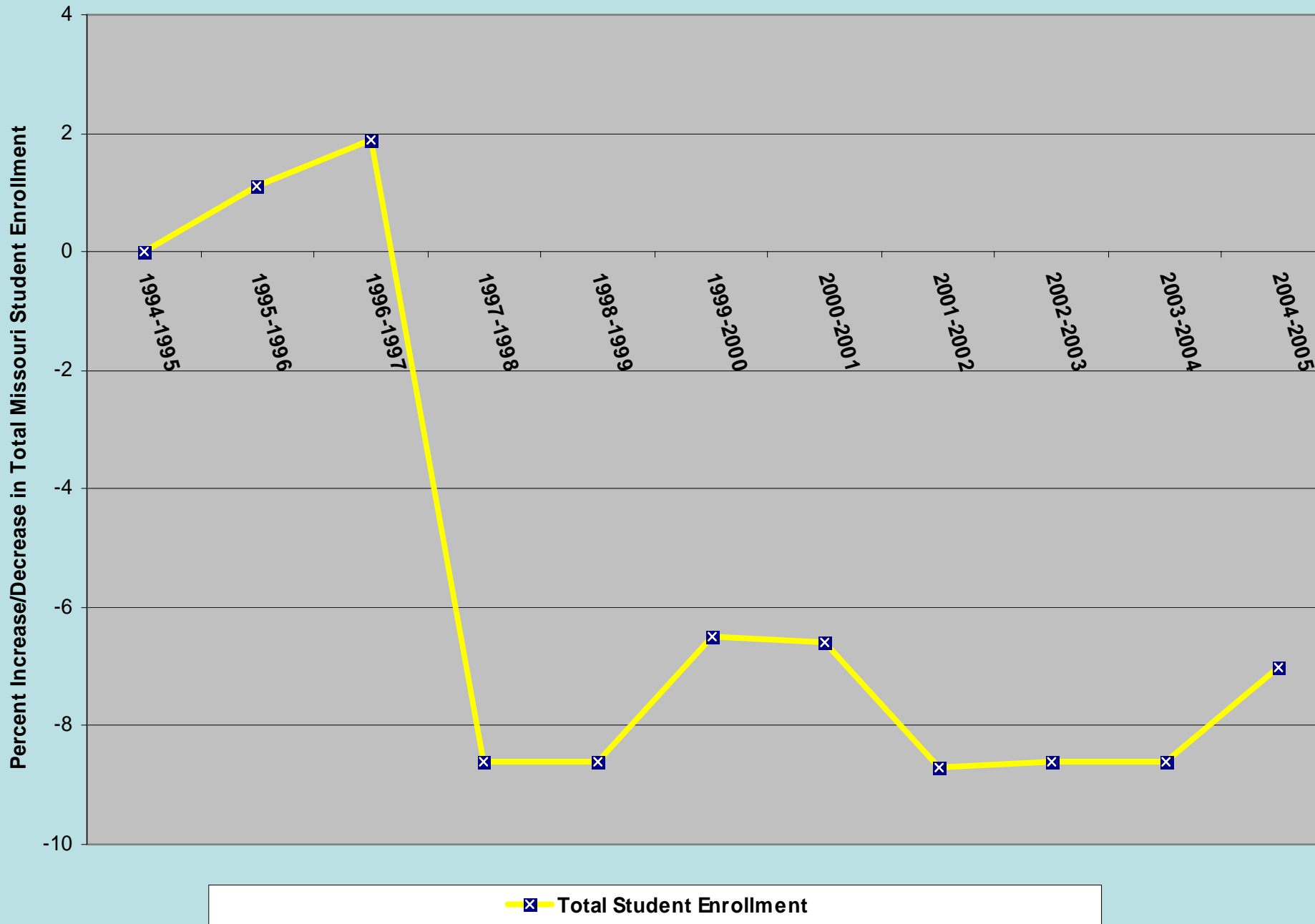
**G
E
T
T
I
N
G**

**S
T
A
R
T
E
D**

**Theresa M. Armentrout
2007 National TESOL
Event Cast Session**



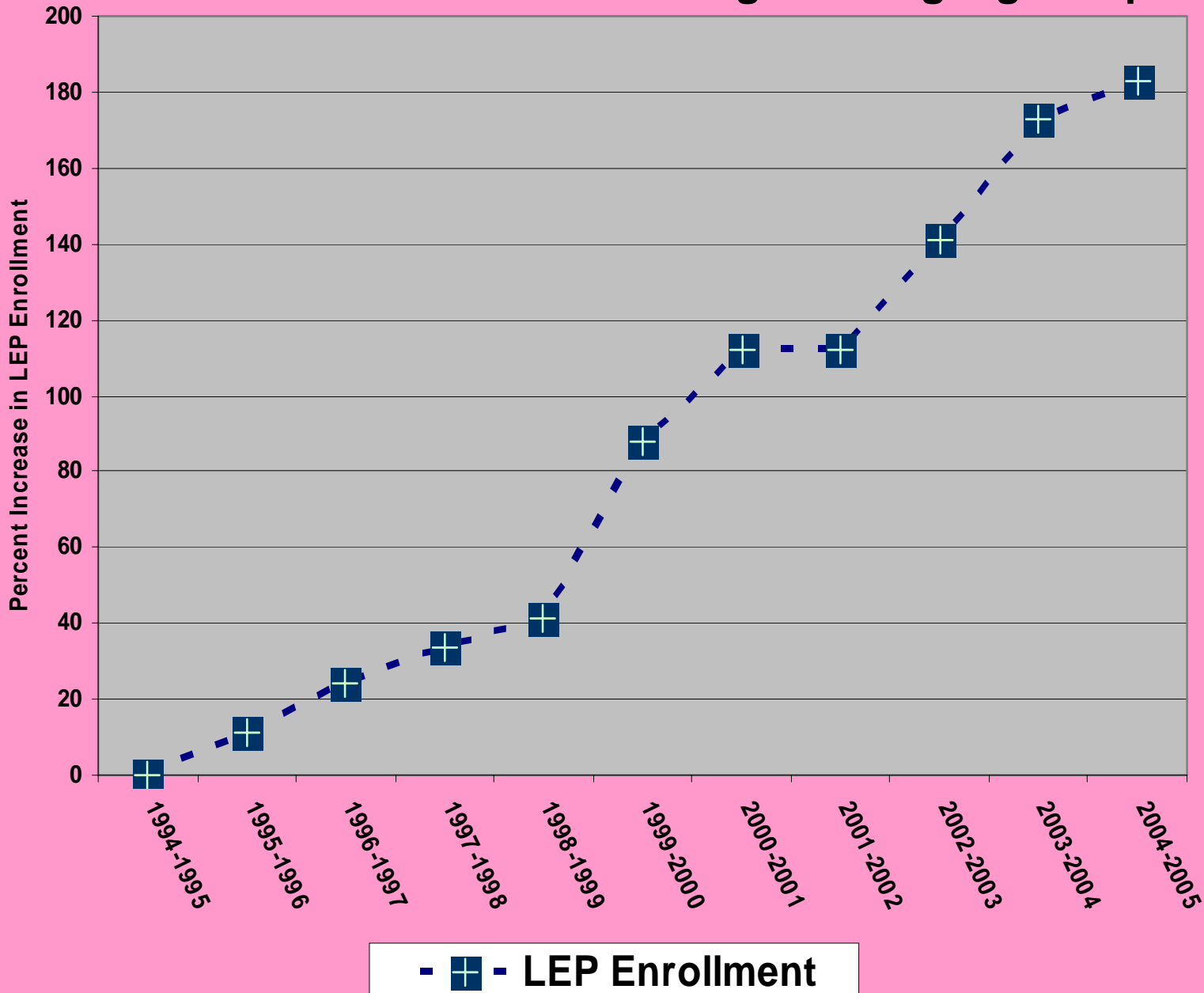
Missouri: Total Student Enrollment (Information from OELA, 8/06)



—x— Total Student Enrollment

Missouri's Rate of LEP Growth

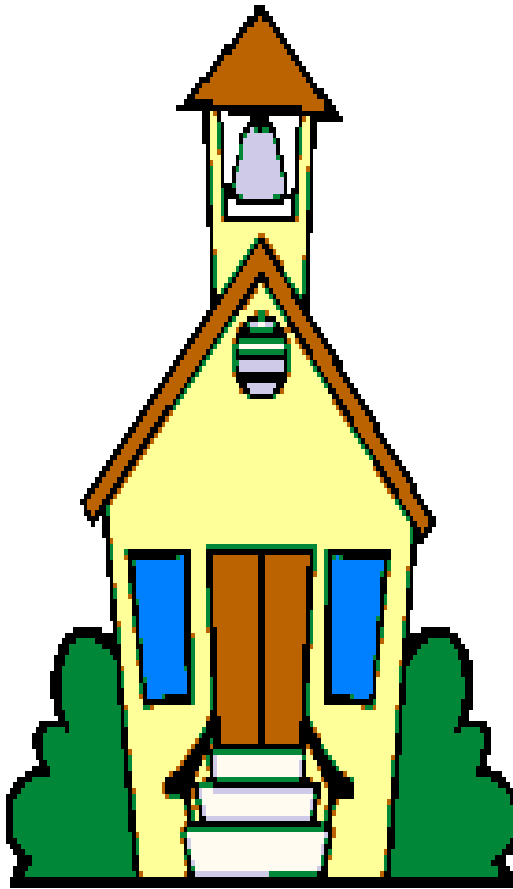
Information from the Office of English Language Acquisition 8/06



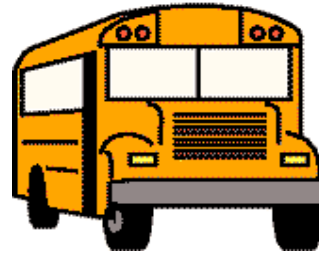
Equity?



**Total
Student
Population
in Missouri
Schools**



**Growth in ELL Population in Missouri
Schools**



**Percentage of total
student Population in
SpEd in Missouri Schools**



**Percentage
of ELLs in
SpEd**

**negative growth
%ile
-7**

**positive growth %ile
+183**

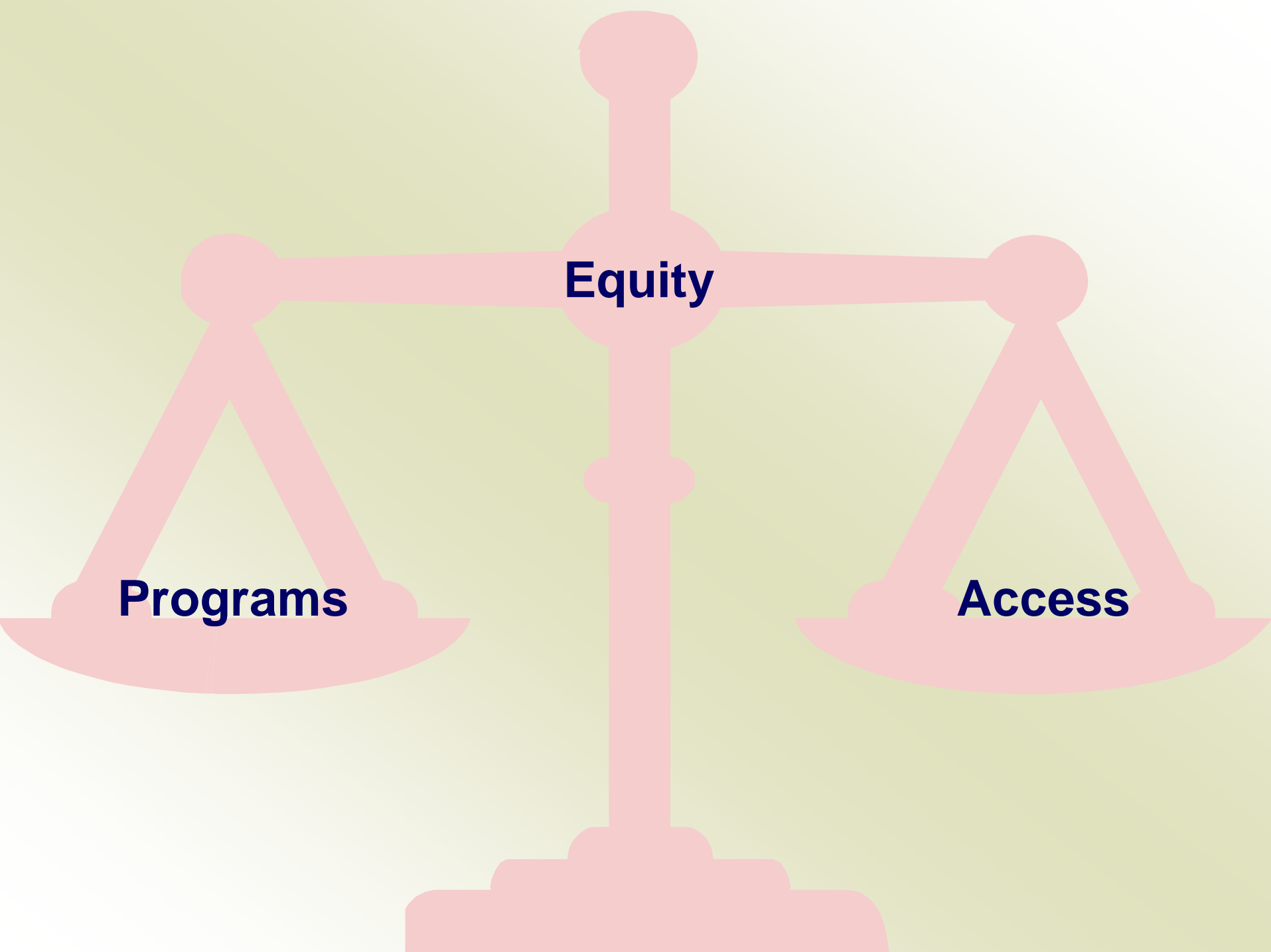
**≈Total %-age
of students
represented in SpEd in
Missouri**

+14

**≈Total %-age
of ELLs represented
in SpEd in Missouri
+1**

Access denied...

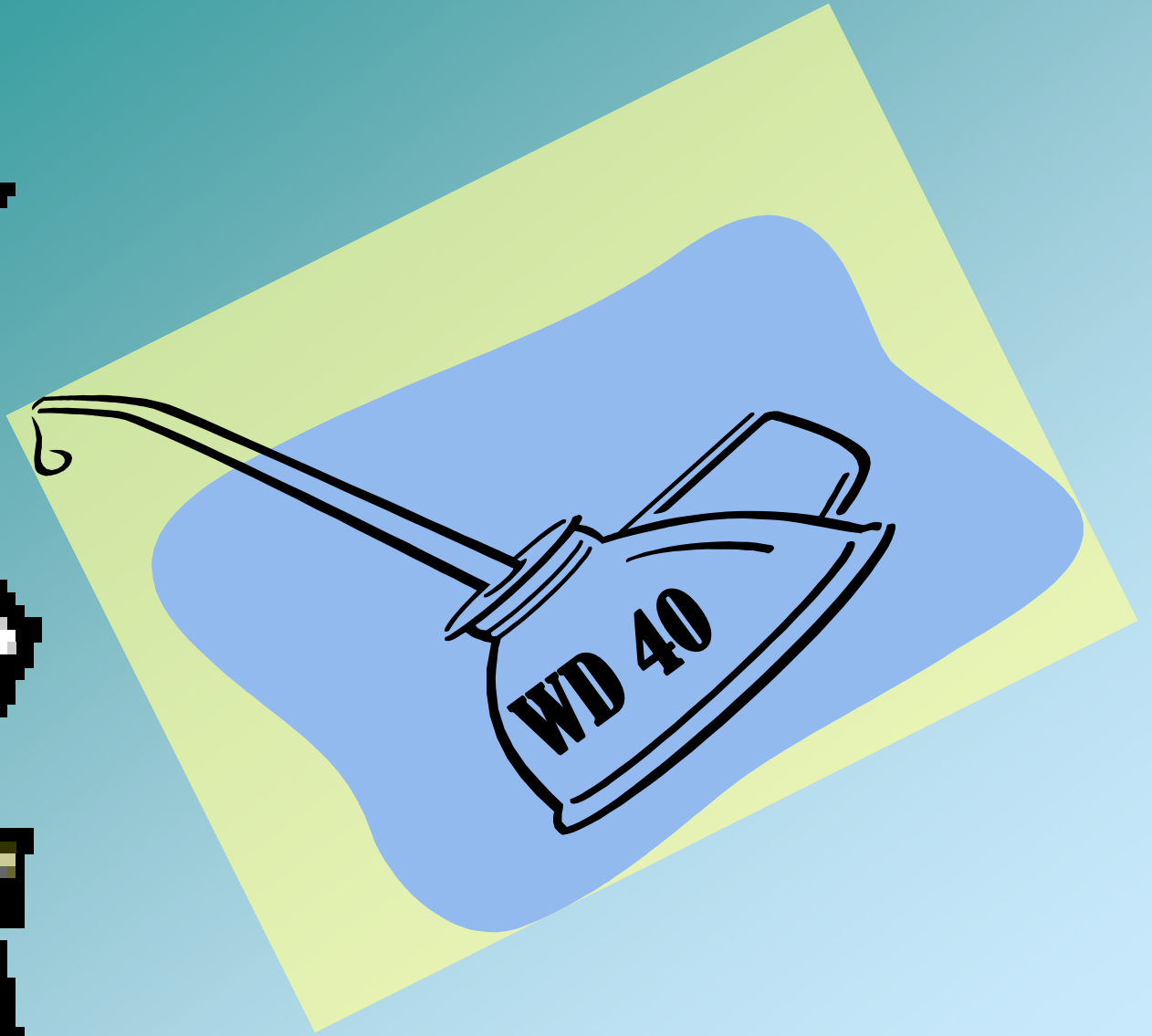
- Disregard for first language of the learner
- Disregard for the culture of the learner
- Lack of understanding the language acquisition process
- Discrepancy model (based on a test score)
- Unfair/biased tests
- Unwillingness to consider alternative assessment practices



Equity

Programs

Access



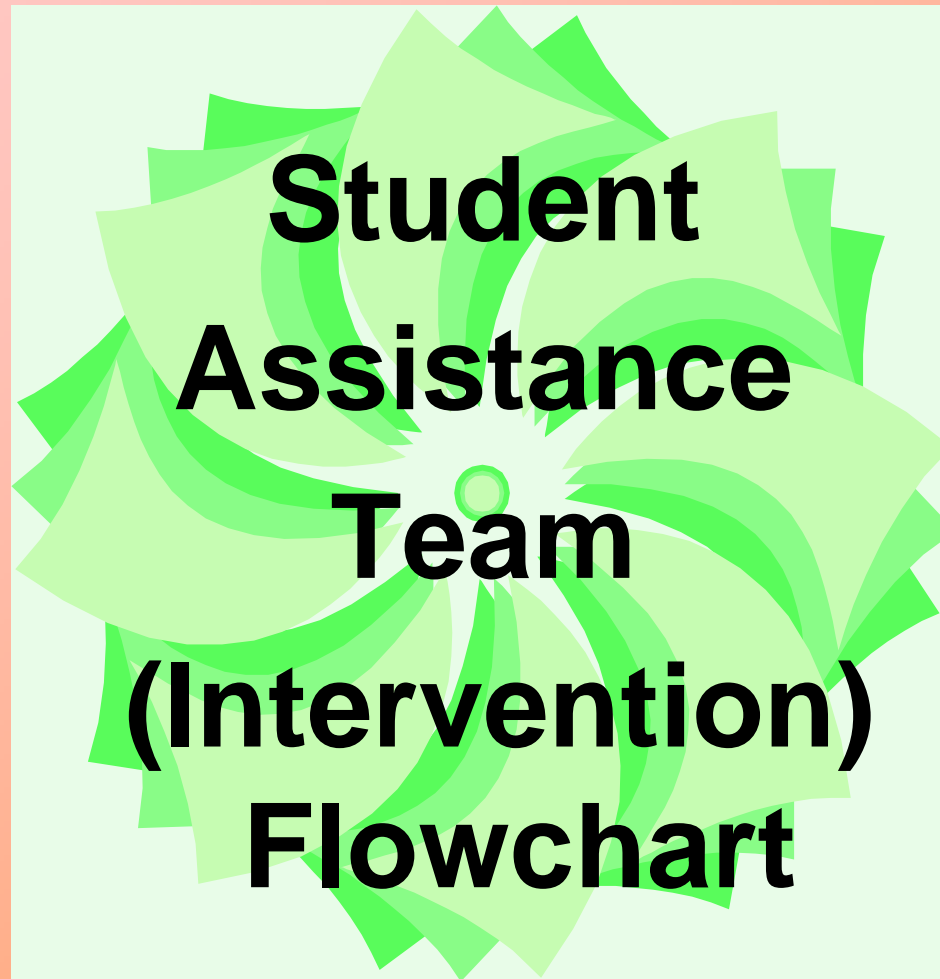
What we have done...

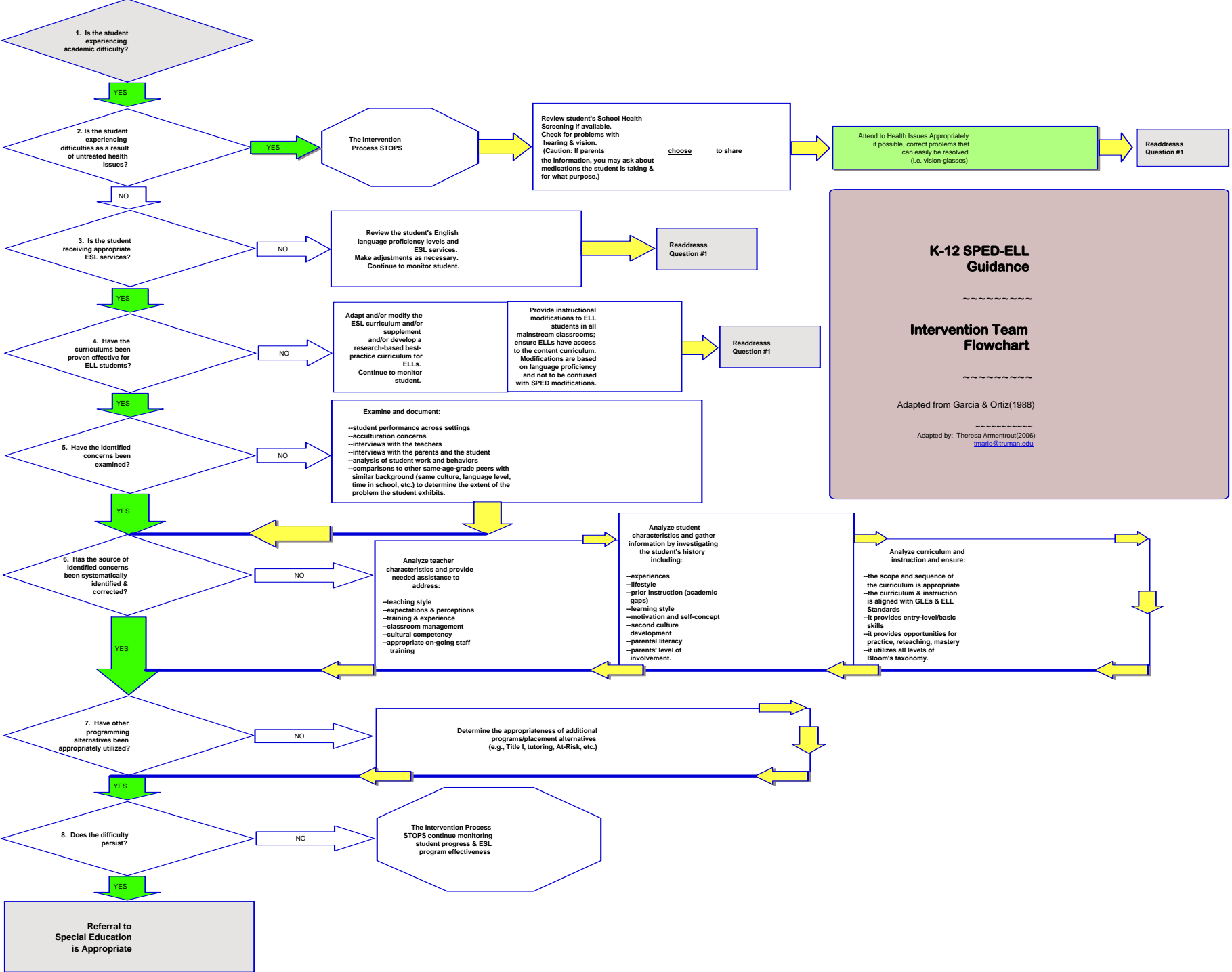
- Gathering of educators to assess the “needs” in the state
- Development of the training module-- *ELLs & SpEd: Appropriate Identification, Assessment, & Eligibility Determination*
- Trainings and revisions...and enlightenment!

What we have done...

- The first year of trainings/response from the schools
- Recognition that something needed to be done at the state level
- Proposal of a taskforce
- Taskforce initiation

The Guiding TOOL





K-12 SPED-ELL Guidance

Intervention Team Flowchart

Adapted from Garcia & Ortiz (1988)

Adapted by: Theresia Armentrout (2006)
tmaw@truman.edu

Status Report...

- **K-12 SpEd-ELL Guidance trainings**
- **Taskforce “Rough Draft”
presentation March 13th**
- **Final edits due May 2007**
- **Presentation to State Board of
Education July 2007**



Electronic Q & A

Starting date: March 29, 2007(one week from today) and

Continuing through: April 12, 2007

<http://rpdc.truman.edu/mell>



The background of the slide is a close-up photograph of numerous daisy-like flowers. The flowers have bright yellow centers and white or pale yellow petals. They are set against a soft, out-of-focus background of green foliage and a reddish-brown wall. The overall lighting is bright and natural, giving the scene a fresh and vibrant feel.

My contact information:

**Theresa M. Armentrout
Instructional Specialist
Truman State University**

NE RPDC &

**Missouri Migrant Education &
English Language Learning
Program (MELL)**

tmarie@truman.edu